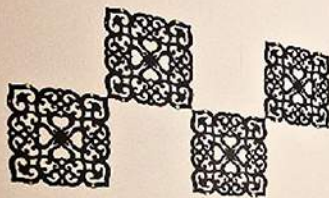


**TWO-STORY STRUCTURE WITH 30
ROOMS IN A GOOD RESIDENTIAL AREA**



**FLOOR AREA: 3288 SQFT
LAND SIZE: 3304 SQFT**



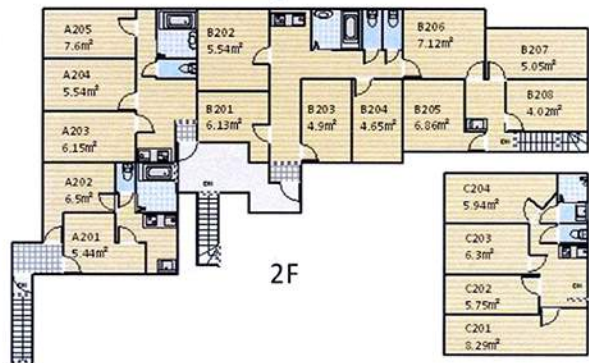
GREAT LOCATION IN SHINJUKU DISTRICT

NEAR KOREA TOWN AND WASEDA UNIVERSITY
WALKING DISTANCE TO SHIN-OKUBO AND HIGASHI-SHINJUKU STATION





LAYOUT





THE CENTURION GROUP
TTR | Sotheby's
INTERNATIONAL REALTY

**Brokerages: Georgetown | Downtown DC | McLean, Virginia | Alexandria, Virginia
Arlington, Virginia | Chevy Chase, Maryland | Annapolis, Maryland**

DMVCenturionGroup.com

Ttrsir.com

Centurion@TTRSIR.com